

# Edge in the time of AI



## Rachel Foresta

Technical Staff & Evangelist, NativeEdge

Rachel.Foresta@Dell.com

Linkedin: [www.linkedin.com/in/rachel-foresta](http://www.linkedin.com/in/rachel-foresta)

**DELL**Technologies



# Non-Disclosure Agreement

The information contained in this presentation is proprietary and considered Dell Technologies Confidential Information, and is subject to your confidentiality agreement with Dell Technologies. THIS INFORMATION IS BEING PRESENTED FOR INFORMATIONAL PURPOSES ONLY AND ADDITIONAL TERMS AND CONDITIONS MAY APPLY TO YOUR PARTICIPATION IN ANY OF THE PROGRAMS PRESENTED HEREIN. Dell Technologies reserves the right to modify the terms of the Program and/or eligibility requirements applicable to the Program at any time or to terminate the Program at any time at its sole discretion. THESE MATERIALS MAY CONTAIN TYPOGRAPHICAL ERRORS AND TECHNICAL INACCURACIES. THE CONTENT IS PROVIDED AS IS, WITHOUT EXPRESS OR IMPLIED WARRANTIES OR GUARANTEES OF ANY KIND.

Copyright © Dell Inc. or its subsidiaries. All rights reserved. Strictly Confidential – Not for Distribution

# Agenda

Edge Introduction

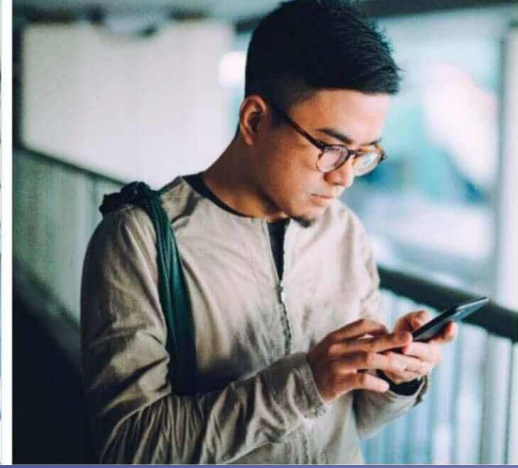
The Affect of AI on Edge Computing

Use Cases

Challenges in Edge Computing

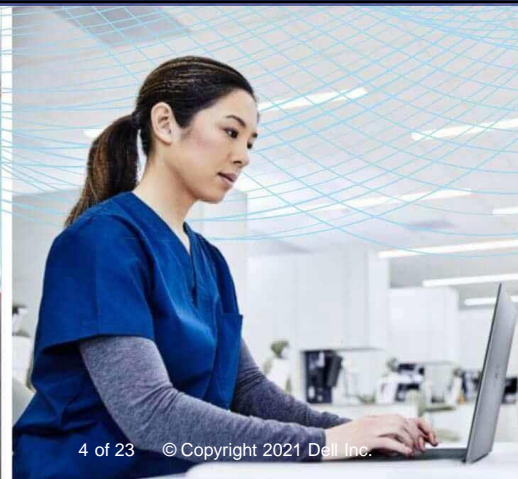
The Way Forward

Dell NativeEdge & Others



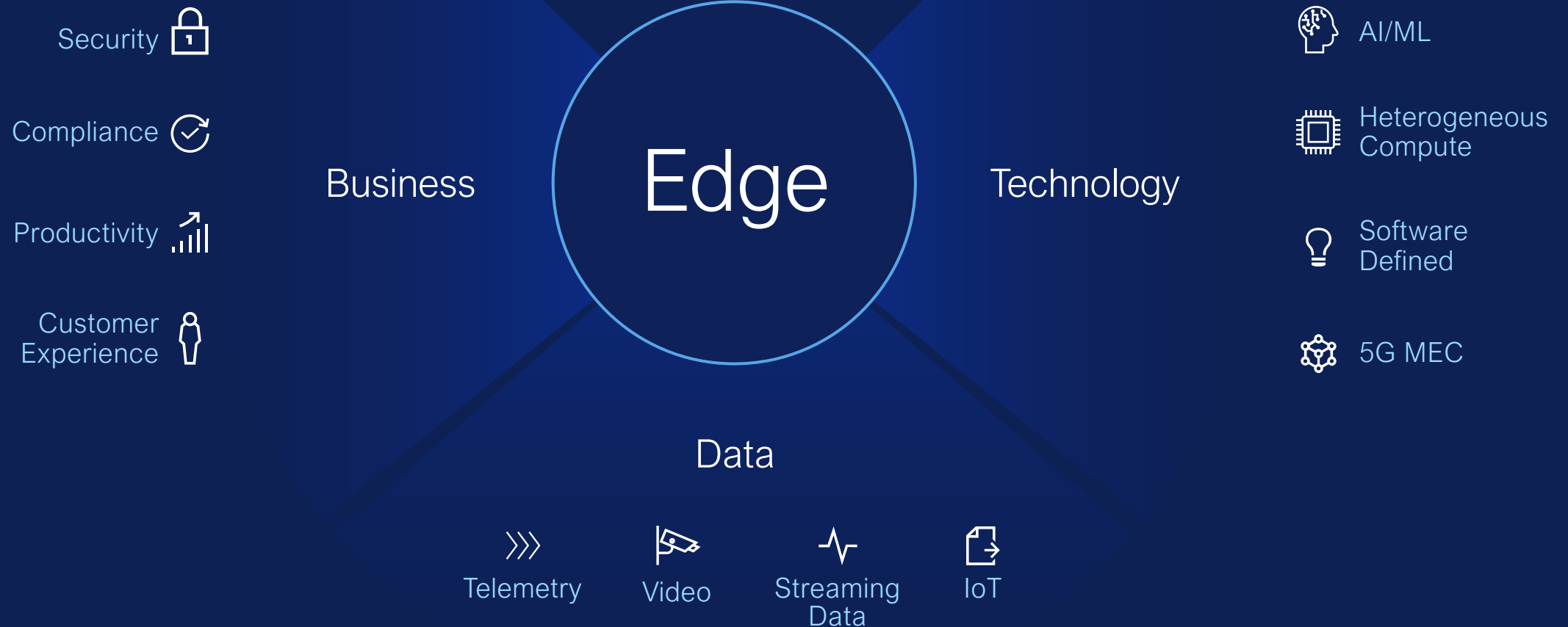
# The edge

where data is acted on near its point of creation to generate immediate, essential value

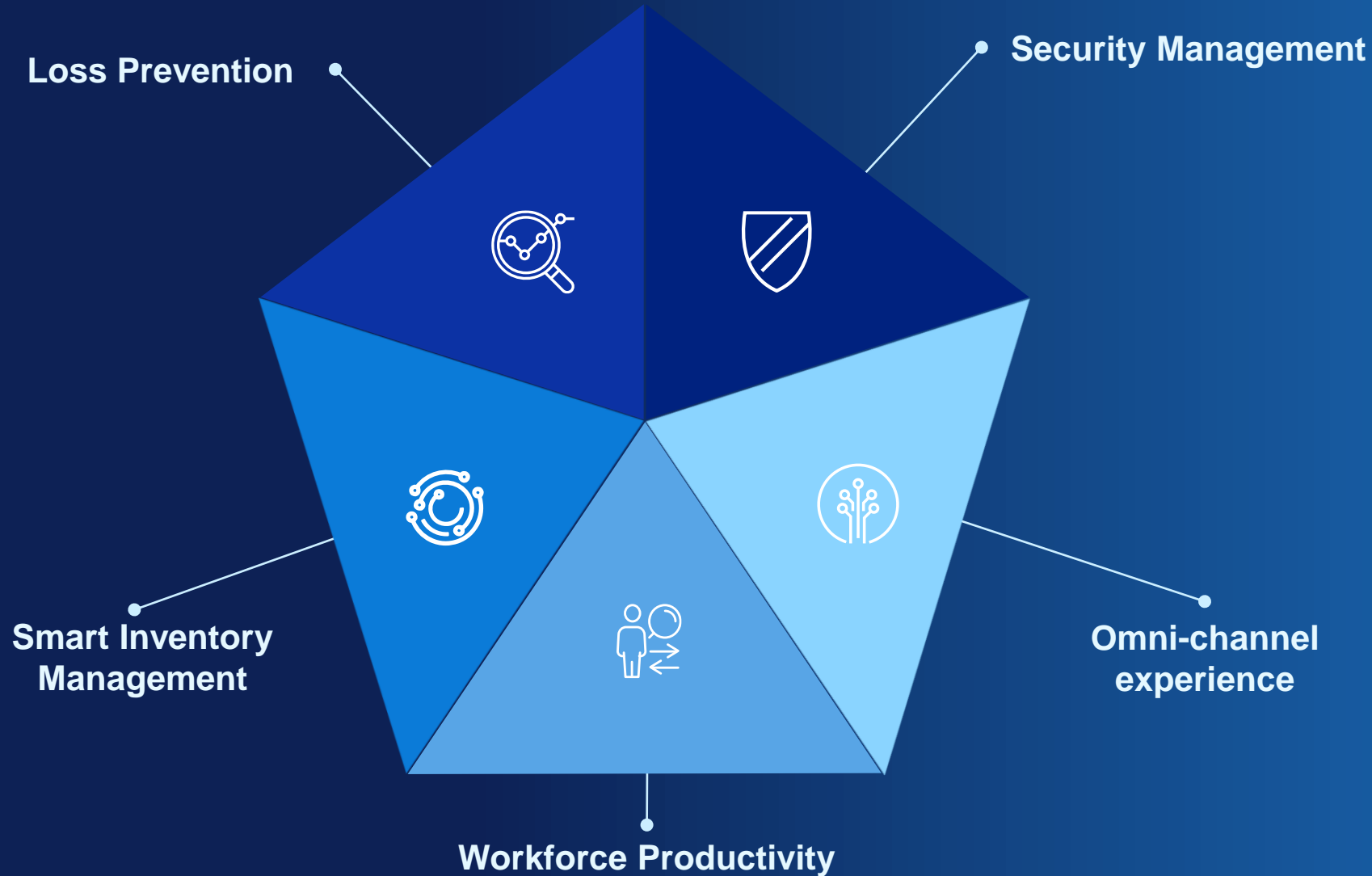


# Customers face a perfect storm at the edge

Data is exponentially expanding the need for real-time insights



# Innovation at the edge...drives Smart Retail transformation



# USE CASES

## FOOTFALL & DEMOGRAPHICS

## ZONE ANALYTICS



### Metrics:

- Store Entries/Exits
- Occupancy
- Age/Gender
- Repeat vs Unique
- Peak Times



### Benefit:

Measure impact of marketing campaigns on store footfall

Predict Occupancy

### Metrics:

- Zone Footfall and Occupancy
- Zone Dwell Time
- Zone Alerts



### Benefit:

Understand customer behavior; Know high traffic areas

Increase revenue with dwell alerts



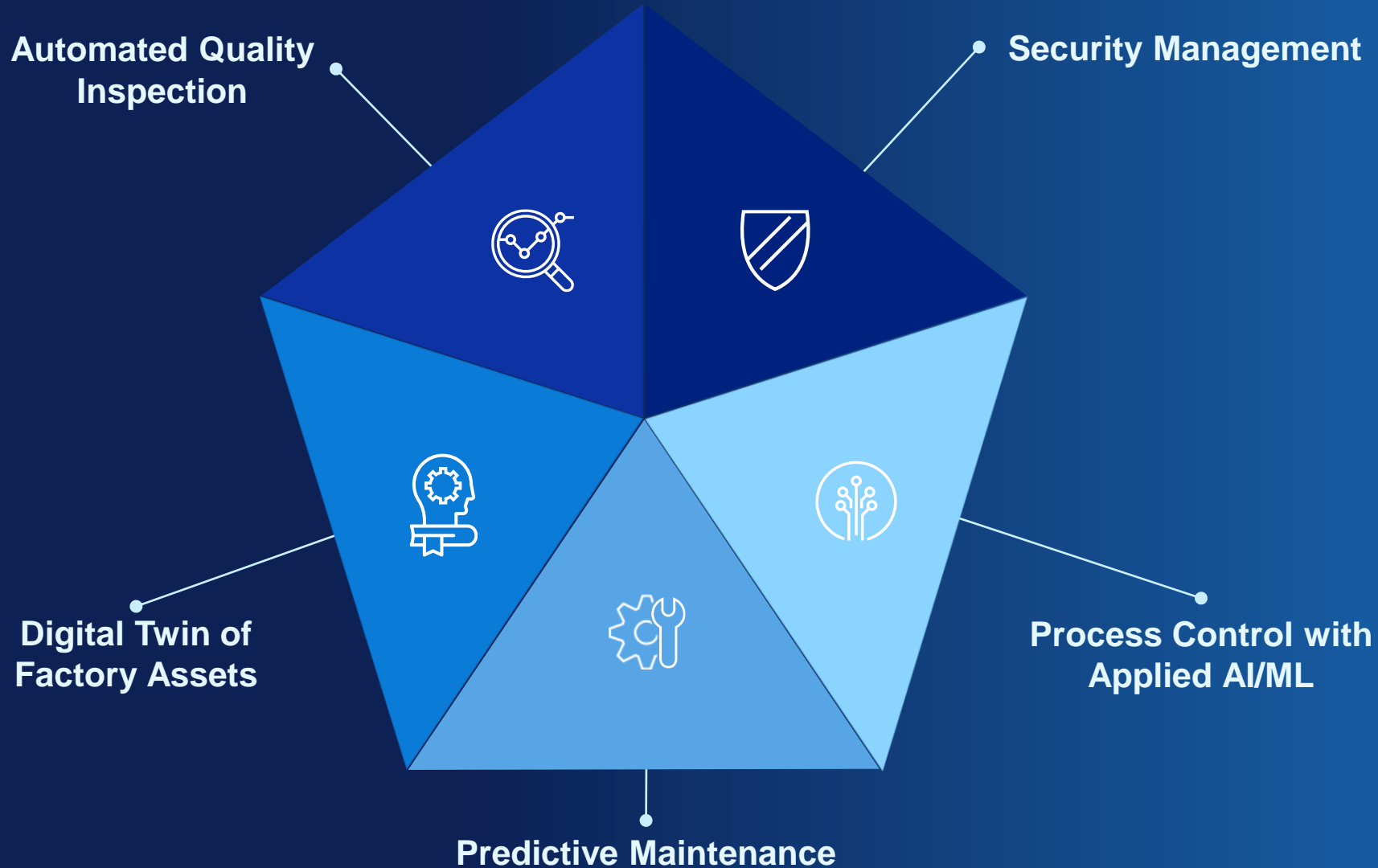
“For a retail customer, we’re talking about 66,000 hours saved in maintenance and compliance for maintaining the edge environment, which translates into about 480metric tons of CO2 saved every year — thanks to automation and end-to-end monitoring.”

**Arnaud Langer**

Global Edge & IoT Senior Product  
Director at Atos



# Innovation at the edge...drives Smart Manufacturing Transformation





# Global Lighthouse Network

**This community of manufacturers shows leadership in using Fourth Industrial Revolution technologies to transform factories, value chains and business models, for compelling financial and operational returns.**

# Edge use cases are pivotal for business modernization



Security  
Management



Predictive  
Maintenance



Automated  
Quality Inspection



Asset Tracking  
and Management



Workforce  
Productivity

Generate more value | Improve safety | Enhance customer experience

Enforce tighter security | Enable faster decisions | Reduce cost

# The edge has unique edge challenges

Distributed systems operation

No local IT support

Operations technology workload support

Secure operations support

Environmental & hardware diversity

Silos & proliferation



# Feedback

“ Managing the **data generated from various sensors** in the factory is becoming increasingly challenging. ”

“ **We struggle** to manage disparate hardware and solutions across the edge. ”

“ **Bandwidth constraints hinder us** from deploying predictive maintenance for our trucks and conveyor belts. ”

“ **Ensuring the security of our systems is a significant challenge**, particularly with the rise of cyberattacks. ”

Based on Dell conducted customer interviews and GLG conducted customer surveys.

## 76%

of lifecycle management time at the edge is spent on routine, repetitive tasks

## 85%

of enterprises take between a 1 week to 1 month to deploy their edge infrastructure once on-site and spend 24-48 hours to apply patches

# Solving edge challenges

Analyst perspectives

## Edge recommendations from Gartner<sup>®</sup>:<sup>1</sup>



“Organize around a centralized edge strategy or blueprint.”

“Design the edge future state based on a ‘platform approach,’ not isolated independent stacks.”

“Plan edge solutions as a synergistic amalgam of existing OT systems, edge-native technology and cloud-based systems.”

<sup>1</sup> Gartner, Inc. – 5 Top Practices of Successful Edge Computing Implementers, February 2023, ID G00781443.  
GARTNER is a registered trademark and service mark of Gartner, Inc. and/or its affiliates in the U.S. and internationally and is used herein with permission.  
All rights reserved.

# Reimagining the way to do edge operations

Without  
skilled local  
resources



With  
Zero Trust



Even with  
connectivity  
challenges



Lower  
barrier  
to entry



Handle  
massive  
scale



Multicloud  
by design



# Industry offerings



Azure Stack Edge  
IoT Hub



Vmware Edge Compute Stack  
Project Keswick





# Dell NativeEdge

Securely scale your edge operations to power any use case

**Zero-touch  
onboarding**



**Zero-trust  
security**



**Multicloud  
connectivity**



**Infrastructure  
management**



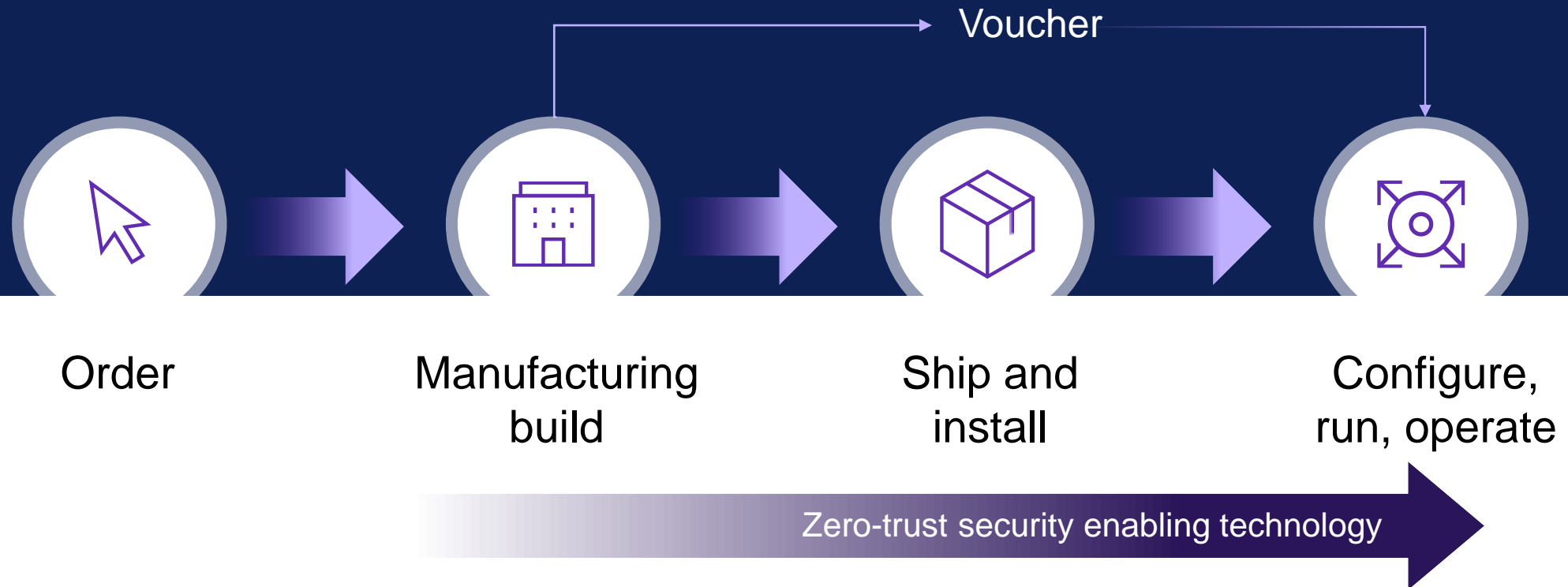
**Application  
orchestration**



Edge operations software platform

# Delivering Zero Trust capabilities: Secure supply chain & beyond

Order – Build – Ship – Run



# Unified infrastructure and application management

Applications



Solution Blueprint  
(Outcome)



## NativeEdge Orchestrator

Blueprints

Secure device onboarding

Zero touch provisioning

Catalog

Lifecycle management

Fleet management

Application and Service Delivery

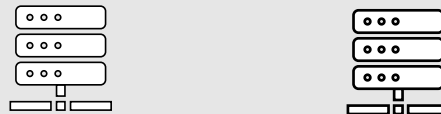
Security and Estate Lifecycle Management

NativeEdge-enabled Devices



Edge

External Infrastructure



Core datacenter

External Infrastructure



Cloud

# Dell Edge Solutions – focused on the sweet spot

## Manufacturing Edge



Also known as Industrial Internet of Things (IoT) or Smart Factory, these solutions gather and process data at the manufacturing edge.

<https://infohub.delltechnologies.com/t/manufacturing-edge-5/>

## Retail Edge



Create secure, connected, and transformative retail solutions at the edge.

<https://infohub.delltechnologies.com/t/retail-solutions/>

## Telco Edge



Dell Technologies is accelerating the transformation to Open RAN by bringing together an open ecosystem of partners and solutions

<https://infohub.delltechnologies.com/t/open-ran-2/>

<https://infohub.delltechnologies.com/t/service-edge-1/>

## Digital Cities



Cities can build a strong digital core leveraging edge to core to cloud technology platforms and end-to-end, ready-to-configure solutions.

<https://infohub.delltechnologies.com/t/digital-cities/>

## Energy Edge



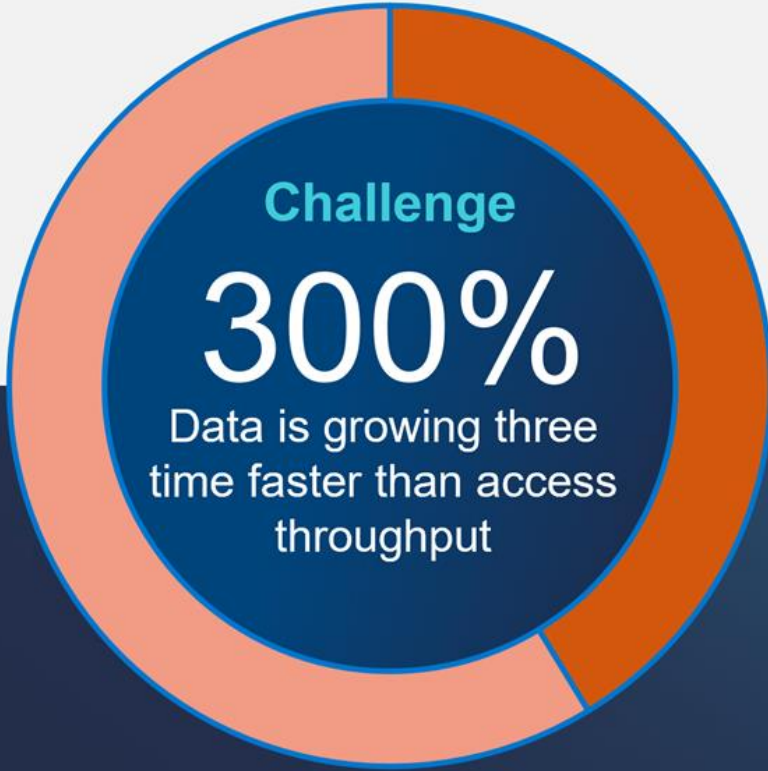
With the global Focus on environmental awareness, the energy sector is entering a new digital era.

<https://www.dell.com/en-us/blog/supporting-the-shift-to-renewable-energy-with-virtualized-architecture/>

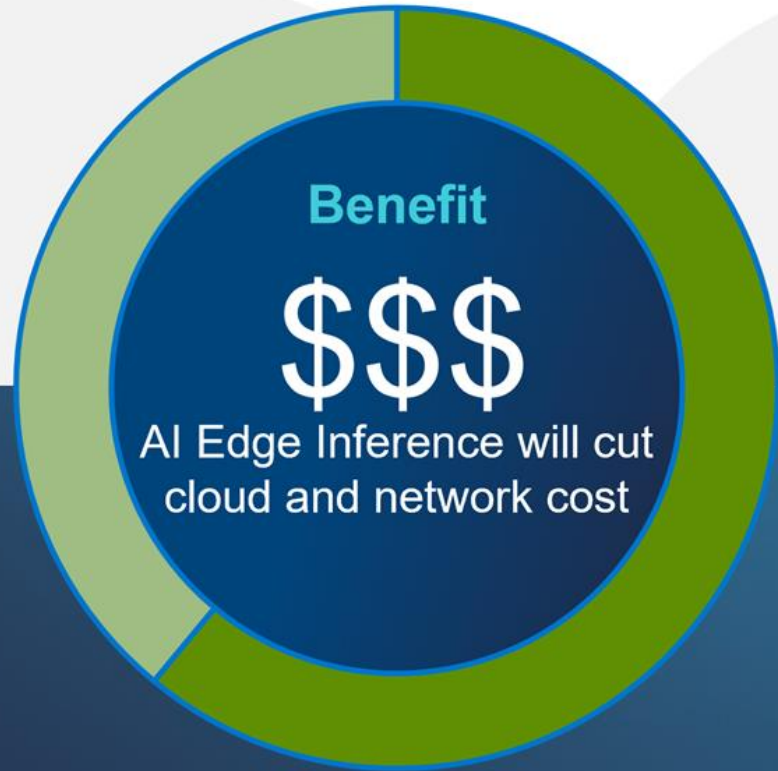
# AI data growth drives distributed edge processing



Respondents: Global



Global  
Data growth driven by apps, sensors, and real-time insights



Respondents: Global

Source: Worldwide IDC Global DataSphere Forecast, 2023-2027: It's a Distributed, Diverse, and Dynamic (3D) DataSphere, 04/2023

IDC, High Data Growth and Modern Applications Drive New Storage Requirements in Digitally Transformed Enterprises, 07/2022