



The Impact of Gaming on AI : Digital Humans becoming a Reality

Machine Intelligence + Emotional Connection

Michael Shepherd | *Sr. Distinguished Engineer*
Services Chief Technology Office

DELLTechnologies

Technology is a useful servant but a dangerous master -ChristianLousLange

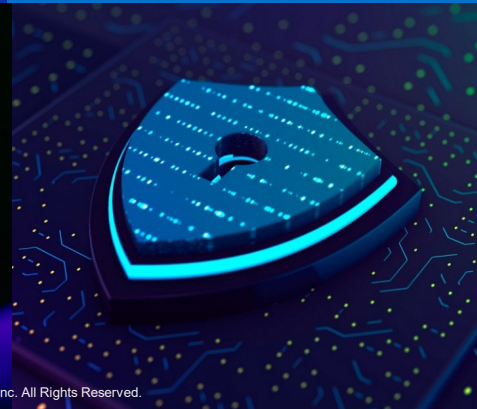
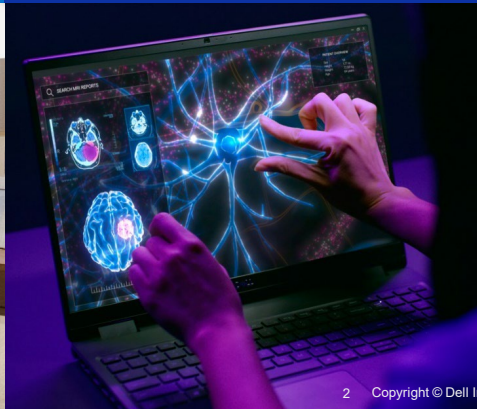
Service Chief Technology Office Unlocking accelerated innovation

Unlock human productivity

Accelerate AI Research
& New User Experiences

Become a trusted partner &
Key source of incubation

Sought after team to
work and innovate



Creating **Technologies**...

...that drive **human** progress

Technology made for Humans

Water

1st Utility

Gas

2nd Utility

Electricity

3rd Utility

Connectivity

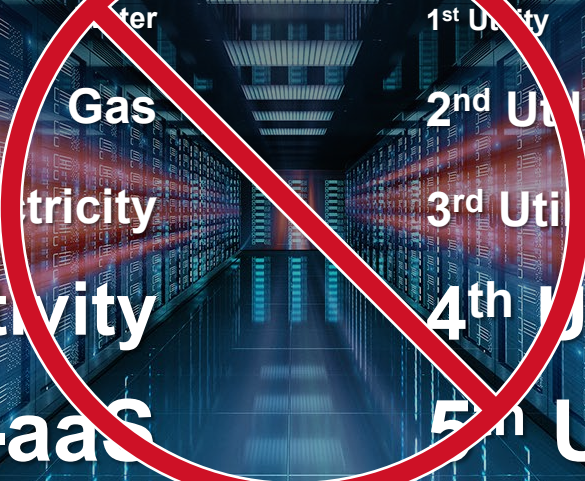
4th Utility

Intelligence-aaS

5th Utility

Building the
“Intelligence Grid” of the Future

Growing up without any of these!



Water
Gas
Electricity
Connectivity
Intelligence-aas

1st Utility
2nd Utility
3rd Utility
4th Utility
5th Utility

Nepal 1978 | Living in the Iron Age



Education without classrooms





When Aspirin was
“cutting edge”
technology
and child
mortality
was 60%



Human
Progress

AI = Augments Human Abilities



Source: www.estherbabazi.com

DELL Technologies

The AI Journey starts with gaming

Data Science (DS)

Artificial Intelligence (AI)

Machine Learning (ML)

*Beating humans in
"Chess"*

Computer Beats Garry Kasparov

World chess champion Garry Kasparov was beaten by a computer in 1997. This was the sign of what artificial intelligence could do and we're seeing the progress day after day. Kasparov's reaction,



Deep Learning (DL)

Beating humans in "Go"

Reinforcement Learning (RL)

Beating humans in "Dota"

Neuromorphic Compute

Quantum Computing

General Intelligence?

1950's

1960's

1970's

1980's

1990's

2000's

2010's

2020's

2030's

2040's

2050's

The AI Journey starts first with **DS**

Data Science (DS)

GenAI is about **10yrs** ahead of where experts in 2017 said we would be.

O'REILLY®

TEAMS ▾

INDIVIDUALS

FEATURES ▾

BLOG

CONTENT SPONSORSHIP



Strata Data & AI Conference

1950's

1960's

1970's

1980's

1990's

2000's

2010's

2020's

2030's

2040's

2050's

Quantum Computing

General Intelligence?

Preparing for Human like assistants that can

- Augment Knowledge
- Assist in Tasks
- Connect Emotionally

Web 3.0



...
AI
Edge
No Code
Blockchain
Metaverse
...



...
RPA
Digital Human Assistants
Robotics
...



Efficiency gains

\$
\$\$
\$\$\$

AI

Augmented
Intelligence

Age of AI is about
human | machine
partnership





Nepal
1979
Studying
Anthropology



Cyborg Anthropology :

A discipline that studies the interaction between humanity and technology from an anthropological perspective.

Two Important Human Factors to remember!



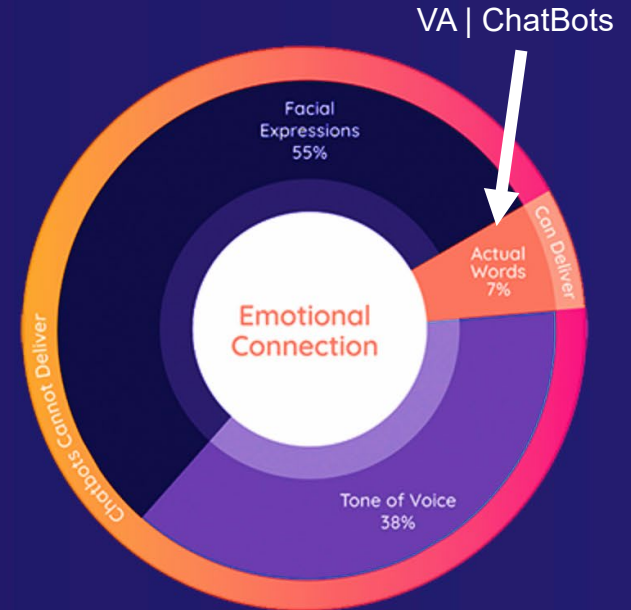
“AI will power the next
age of human progress.”

FORRESTER

WORDS without emotion is not sufficient

Only 7% of great communication is made up of the words we say

– the rest is how we say it using tone of voice and body language. Digital humans can see and listen to users to understand the meaning behind the words. They can then use their own tone of voice and body language to create lifelike human conversations.

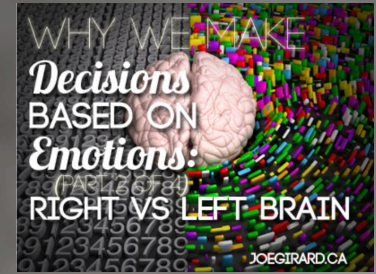


95% of purchasing decisions
are driven by emotion –
subconscious desires vs
conscious reasoning.

HARVARD
UNIVERSITY



How does this interaction
make me “feel”?



Avatars | Gamification of GenAI



INCLUSIVE INNOVATIONS:

Digital Human Assistants

Multi-lingual capable 62 languages

Site info and Navigation

- Emma
 - Amarillo's First Digital Citizen





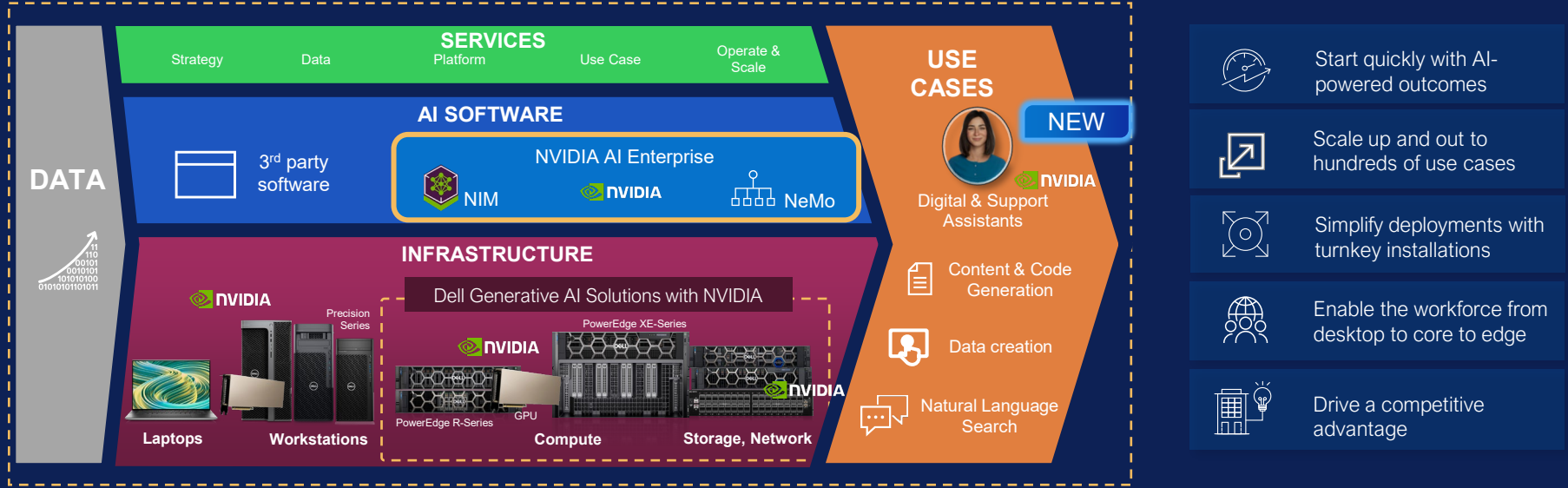
Live
DEMO

DELL
Technologies



Introducing the Dell AI Factory with NVIDIA

The AI innovation framework to accelerate business use cases at scale



The world's broadest GenAI solutions portfolio from desktop to data center to cloud, all in one place¹

75%
more cost-effective inferencing than public cloud IaaS²

Dell has the broadest portfolio of AI workstations for AI software development and training³

82%
Of ITDMs prefer an on-prem or hybrid model for GenAI⁴

¹Based on Dell analysis, August 2023. Dell Technologies offers solutions engineered to support AI workloads from Workstations PCs (mobile and fixed) to Servers for High-performance Computing, Data Storage, Cloud Native Software-Defined Infrastructure, Networking Switches, Data Protection, HCI and Services.
²Based on Enterprise Strategy Group research commissioned by Dell, comparing on-premises Dell infrastructure versus native public cloud infrastructure as a service, April, 2024. Analyzed models show a 7B parameter LLM leveraging RAG for an organization of 5k users being up to 75% more cost effective. Actual results may vary. [EESG ESG Report](#)
³Based on internal analysis, February 2024. Compared to the workstation class products available in market with NVIDIA RTX 5000 Graphic Cards or higher.
⁴Source: Dell Technologies Generative AI Pulse Survey, August and September 2023. www.dell.com/GenAIPulse